



AFRICA GOLF
• MANAGEMENT •

360 FIVE
everyday



PHOTOBOOK
VOL 01. 2024

OUR STORY

Africa Golf Management is a family-owned business, born out of a shared family passion for sport and golf.

We are reliable and professional suppliers of high-end golf & leisure apparel and accessories.

With a global reach stretching from Africa to Europe, we pride ourselves in showcasing only the very best brands and products to potential retailers.

A family business enables us to share values that combine fairness, responsibility with radical transparency, both internally and with our clients.

We invest our time in sharing our knowledge to ensure our clients' success, while fulfilling your needs to the absolute best of our ability.



What's your daily style?

FEDORA 06 - 28

Pinched crown with a medium to large brim width

COWBOY 29 - 30

Wide brim with a flexible wire hidden in the brim edge

CAPELINE 31 - 35

Rounded crown with a medium to large brim width

VISOR 36 - 37

Crownless hat with a wide brim and strap encircling the head

TRILBY 38

Short brim with a distinctive upturned back brim

BUCKET 39 - 42

Downward sloping brim with a small to large brim width

BENEFITS OF BEING A HAPPY HATTER

Having fun
reduces
stress and
boosts
energy

Fun
improves
ability to
cope

A positive
outlook on
life enhances
your sense of
happiness

Happiness leads
to healthier
behaviours, and
it predicts
greater
longevity

Fun
improves
connections
with others

A carefree
life is a
happy life



In a sometimes challenging world,

360FIVE Everyday believes in the power of joy to restore life balance by championing you to have a positive perspective on life and embrace the colorful world you live in.

Let's team up on our journey in pursuit of happiness.



ADJUSTABLE SIZING



- 1 Sizes range from: 56 cm (S/M), 57 - 58 cm (M/L), 59 - 60 cm (L/XL) and 61 cm (XXL)
- 2 Use a soft tape measure and place it around your head, positioned mid-forehead and just above the ears
- 3 Measure your head in centimeters to find the right hat size
- 4 If your measurement falls between sizes, choose the larger size to be guaranteed a comfortable fit
- 5 Simply find your perfect fit by tightening the internal drawstring or external toggle

QUALITY MATERIALS AND ETHICAL PARTNERSHIPS

We believe we can contribute to a fun and carefree life by offering affordable, fashionable and sun safe hats made from quality materials. We team up with manufacturing partners that comply to ethical working standards and consciously strive to learn and contribute to a more sustainable manufacturing process.



PAPER / STRAW

Organic reeds and grasses, harvested and dyed before being woven into a braid. Multiple braids of this natural fibre are stitched together to form the hat



POLYESTER BRAID

Threads of durable polyester fibres are woven together to form a braid which is stitched together to form the hat. Lightweight, hand washable and crush-resistant



COTTON

Durable material that can be packed and folded, making it travel-friendly. Lightweight, hand-washable, and crush-resistant



POLYESTER KNIT / ACRYLIC

The tight knit of the synthetic polyester fibres creates a soft, supple hat with a comfortable fit that is colourfast, hand washable and crush-resistant



100% WOOL FELT

Premium quality felt designed using 100% wool, sourced from R.W.S (Responsible Wool Standard) Certified suppliers. Luxurious, durable & packable



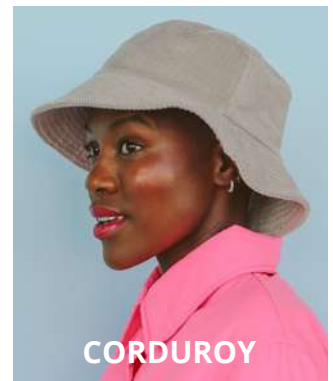
CHENILLE

A soft woven yarn with a distinctive fuzzy look & feel. Durable, hand washable and crush-resistant



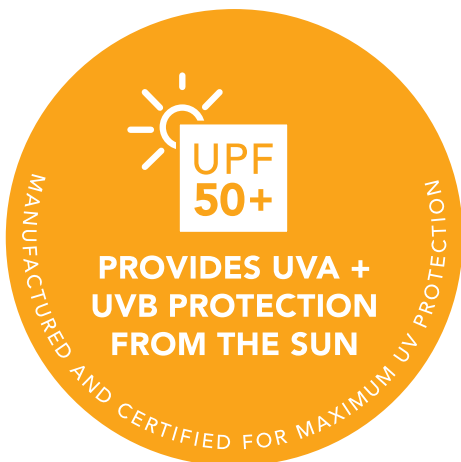
POLYESTER FELT

This synthetic felt material is easy to care for, durable and retains its shape



CORDUROY

Soft raised or ridged material that can be packed and folded, making it travel-friendly. Lightweight, hand washable and crush-resistant



MAXIMUM SUN PROTECTION

Our **UPF50+ certified hats** have undergone extensive testing by independent laboratories and adhere to strict UP50+ regulations. A hat with a UPF50+ rating blocks 97 - 98% of the sun's harmful UVA and UVB rays. Complies with the recognized standards of EN 13758-2:2003+A1.

* IMAGES IN THIS PHOTOBOOK ARE INTENDED AS A GUIDE ONLY. WE DO OUR BEST TO ENSURE OUR PHOTOS ARE AS TRUE TO COLOUR AS POSSIBLE, ACTUAL COLOURS MAY VARY.

New





CARMEL

SIZE: M/L
MATERIAL: 70% PAPER FIBRE, 30% POLYESTER
ADJUSTMENT: DRAWSTRING
PACK WITH CARE



BLACK



CARMEL



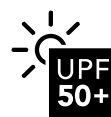
CARMEL

NAVY



ERV2120 / COOPER

UNISEX • SIZE: M/L, L/XL
MATERIAL: 100% PAPER FIBRE
ADJUSTMENT: DRAWSTRING
PACK WITH CARE



BEIGE

CAMEL

NAVY



CAMEL

fedora

BEIGE

CAMEL



New



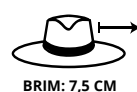
fedora



BLUE

ERV2400 / RAINBOW REEF

UNISEX • SIZE: M/L, L/XL
MATERIAL: 100% PAPER FIBRE
ADJUSTMENT: DRAWSTRING
PACK WITH CARE



BLUE



BRICK



BRICK



NATURAL

ERV1055 / EMILY

SIZE: M/L
MATERIAL: 100% PAPER FIBRE
ADJUSTMENT: DRAWSTRING
PACK WITH CARE



SPOT CLEAN

BRIM: 7,5 CM

CROWN: 11 CM

New



NATURAL



WHITE



WHITE

fedora

ERV1070 / SHARON



IVORY

SIZE: M/L
 MATERIAL: 100% PAPER FIBRE
 ADJUSTMENT: DRAWSTRING
 PACK WITH CARE



New



IVORY



NATURAL



NATURAL



ERV1115 / CLARKE

UNISEX • SIZE: M/L, L/XL
MATERIAL: 100% PAPER FIBRE
ADJUSTMENT: DRAWSTRING
PACK WITH CARE



IVORY/BLACK



fedora





ERV1130 / DIANNE

SIZE: M/L
MATERIAL: 100% PAPER FIBRE
ADJUSTMENT: DRAWSTRING
PACK WITH CARE



NATURAL

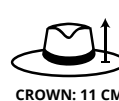
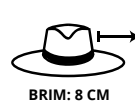


MIXED CAMEL



ERV2150 / SHAUNA

UNISEX • SIZE: M/L, L/XL
MATERIAL: 100% POLYESTER
BRAID ADJUSTMENT: DRAWSTRING



New



IVORY/WHITE



MIXED CAMEL



LIGHT GREY



IVORY/WHITE

NATURAL



ERV2125 / PERRY

UNISEX • SIZE: M/L, L/XL
MATERIAL: 100% POLYESTER
BRAID ADJUSTMENT: DRAWSTRING



NATURAL



GREY



GREY

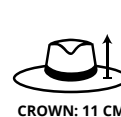
fedora

NATURAL



ERV2301 / JESSIE

UNISEX • SIZE: M/L, L/XL
MATERIAL: 70% PAPER FIBRE, 30%
POLYESTER **ADJUSTMENT:** DRAWSTRING
PACK WITH CARE



SPOT CLEAN

BRIM: 7,5 CM

CROWN: 11 CM



CARAMEL



NATURAL



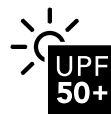
NATURAL



BLACK/CAMEL

ERV2115 / TYLER

UNISEX • SIZE: M/L, L/XL
MATERIAL: 100% PAPER FIBRE
ADJUSTMENT: DRAWSTRING
PACK WITH CARE



SPOT CLEAN



BRIM: 7,5 CM



CROWN: 11 CM



BLACK/CAMEL



NATURAL/BEIGE



NATURAL/BEIGE

fedora



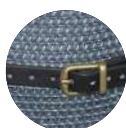
NAVY COMBO

ERV1110 / MOORE

UNISEX • SIZE: M/L, L/XL
MATERIAL: 100% PAPER FIBRE
ADJUSTMENT: DRAWSTRING
PACK WITH CARE



CARAMEL



NAVY COMBO



CARAMEL

New



fedora



ERV2405 / SPARKLING SANDS

SIZE: M/L
MATERIAL: 100% PAPER STRAW
ADJUSTMENT: DRAWSTRING
PACK WITH CARE



NATURAL





IVORY/STONE

ERV2302 / GEMMA

SIZE: M/L
MATERIAL: 100% PAPER FIBRE
ADJUSTMENT: DRAWSTRING
PACK WITH CARE



IVORY/BLACK



IVORY/STONE



IVORY/BLACK

fedora



ERV2303 / KYLIE

SIZE: M/L

MATERIAL: 80% PAPER FIBRE, 20% RAFFIA

STRAW ADJUSTMENT: DRAWSTRING

PACK WITH CARE



NATURAL / MUSHROOM



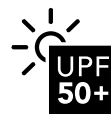
New

NATURAL

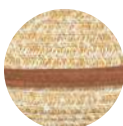


ERV2305 / SUMMER

UNISEX • SIZE: M/L, L/XL
MATERIAL: 100% PAPER FIBRE
ADJUSTMENT: DRAWSTRING
PACK WITH CARE



NATURAL



CARAMEL



TAUPE



TAUPE

fedora



ERV2140 / JULIA

SIZE: M/L
MATERIAL: 100% PAPER FIBRE
ADJUSTMENT: DRAWSTRING
PACK WITH CARE



CARAMEL





ERV1065 / FELICITY

SIZE: M/L
MATERIAL: 100% POLYESTER
KNIT ADJUSTMENT: DRAWSTRING



BEIGE



PETROL BLUE



PETROL BLUE

New





ERV2307 / BREEZE

SIZE: M/L

MATERIAL: 70% PAPER FIBRE, 30% POLYESTER

ADJUSTMENT: DRAWSTRING

PACK WITH CARE



 Made in Cape Town



NATURAL



New





ERV2410 / MOONLIGHT COVE

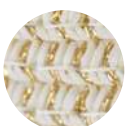
SIZE: M/L
MATERIAL: 100% PAPER FIBRE
ADJUSTMENT: DRAWSTRING
PACK WITH CARE



SPOT CLEAN

BRIM: 13 CM

CROWN: 10 CM



IVORY/GOLD





ERV1135 / ZETA

SIZE: M/L
MATERIAL: 100% PAPER FIBRE
ADJUSTMENT: DRAWSTRING
PACK WITH CARE



NATURAL/BLACK





ERV1035 / FAYE

SIZE: M/L
MATERIAL: 100% PAPER FIBRE
ADJUSTMENT: DRAWSTRING
PACK WITH CARE



NATURAL

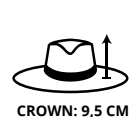
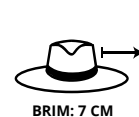




SCARLET

ERV1140 / KIERA

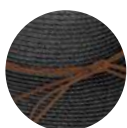
SIZE: S/M
MATERIAL: 100% PAPER FIBRE
ADJUSTMENT: DRAWSTRING
PACK WITH CARE



SPOT CLEAN

BRIM: 7 CM

CROWN: 9,5 CM



BLACK



SCARLET



BLACK



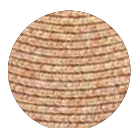
ERV2165 / CAREY

SIZE: ONE SIZE

MATERIAL: 100% POLYESTER

BRAID ADJUSTMENT: VELCRO

ROLL UP, CRUSH-RESISTANT



WHEAT



ERV2304 / CHANTAL



SIZE: ONE SIZE
MATERIAL: 100% PAPER FIBRE
ADJUSTMENT: ELASTIC/BUCKLE
ADJUSTMENT PACK WITH CARE



SPOT CLEAN



BRIM: 12 CM



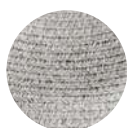
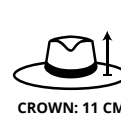
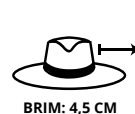
CARAMEL





GREY

UNISEX • SIZE: M/L, L/XL
MATERIAL: 100% POLYESTER
BRAID ADJUSTMENT: DRAWSTRING



GREY



NATURAL



NATURAL



WHEAT

ERV2135 / LACEY

SIZE: M/L
MATERIAL: 100% POLYESTER
BRAID ADJUSTMENT: DRAWSTRING



IVORY

SUEDE

WHEAT



SUEDE



WHITE/NAVY

bucket

ERV2155 / JODY

UNISEX • SIZE: M/L, L/XL
MATERIAL: 100% COTTON
ADJUSTMENT: ELASTIC TOGGLE



UPF
50+



PACKABLE



HAND WASH



BRIM: 6 CM



CROWN: 11 CM



GREY/NAVY



WHITE/NAVY



GREY/NAVY



NATURAL/BLACK

SIZE: M/L
MATERIAL: 100% PAPER FIBRE
ADJUSTMENT: DRAWSTRING
PACK WITH CARE



SPOT CLEAN



BRIM: 8 CM



CROWN: 11 CM



GREY/BLACK



NATURAL/BLACK



PINK/BLACK



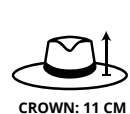
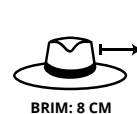
PINK/BLACK

bucket



ERV2130 / NINA

SIZE: M/L
MATERIAL: 100% PAPER FIBRE
ADJUSTMENT: DRAWSTRING
PACK WITH CARE



BLACK/CAMEL



BLACK/CAMEL

INFORMATION FOR BUYERS

ORDER QUANTITIES

Minimum order quantity is a box of 25 hats, across any product style and colour.

Can be ordered in combination with House of Ord Cape Town Boutique Collection and 360FIVE Everyday Headwear to make up box quantity.

SHIPPING

House of Ord Cape Town is stocked in the Netherlands. AGM facilitates all orders & transport.

Clients may opt to to organise shipping themselves.

• AGM •

CONTACT US

Send us an email for regional pricing and order forms, to get your hands on our high quality 360FIVE Headwear today.

Feel free to contact our friendly staff to schedule a video chat for further information, enquiries or support with your order.

Please allow up to 24 hours for a response from our team.

AFRICA GOLF MANAGEMENT

ORDERS & ENQUIRIES

info@africagolfmanagement.com

WEBSITE

www.africagolfmanagement.com