



HOUSE OF ORD
CAPE TOWN



AFRICA GOLF
• MANAGEMENT •



2025
COLLECTION

OUR STORY

Africa Golf Management is a family-owned business, born out of a shared family passion for sport and golf.

We are reliable and professional suppliers of high-end golf & leisure apparel and accessories.

With a global reach stretching from Africa to Europe, we pride ourselves in showcasing only the very best brands and products to potential retailers.

A family business enables us to share values that combine fairness, responsibility with radical transparency, both internally and with our clients.

We invest our time in sharing our knowledge to ensure our clients' success, while fulfilling your needs to the absolute best of our ability.

A CAPE TOWN LOVE AFFAIR

Nestled at the southernmost tip of Africa, Cape Town is a vibrant blend of cultures that captivate your senses, leaving a lasting impression on your heart and soul. A haven of golden beaches, endless blue skies and the majestic Table Mountain, Cape Town is a paradise like no other.

Just beyond the city's cosmopolitan allure lies the untamed wilderness of the African continent. Affectionately known as The Mother City, Cape Town feels like home - a place of warmth, wonder and welcoming embrace.



Inspired by a deep-rooted love for this charming city, House of Ord - Cape Town is committed to providing comfortable and elegant sun protection.

With a keen eye for detail our hats embody a dedication to quality, crafted with premium materials in timeless designs that provide both style and durability for sun seekers everywhere.





FEDORA P7 - P24
Pinched crown with a medium to large brim width



COWBOY P25
Wide brim with a flexible wire hidden in the brim edge



BUCKET P26 - P29
Downward sloping brim with a small to large brim width



VISOR P30 - P31
Crownless hat with a wide brim and strap encircling the head



TRILBY P32 - P34
Short brim with a distinctive upturned back brim



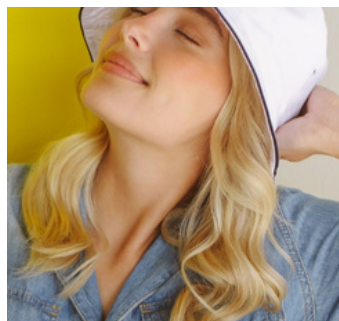
CHINSTRAP P35
Medium to large brim with an adjustable strap at the chin



BRETON P36
Rounded crown with a medium upturned brim



GOLF P37 - P41
Designed to keep your metal golf ball-marker secure



360FIVE hats P42 - 47
Everyday hat collection



TRAVEL AND CARRY THE SHADE WITH YOU

Most of our hats are travel-friendly, and depending on the material, can be packed flat in your bag. They will simply bounce back on arrival. Some hats must be handled with more care; simply check the instructions on the tag.

MAXIMUM SUN PROTECTION

Our hats provide superior sun protection with a **UPF50+** rating, effectively blocking 97-98% of harmful UVA and UVB rays.

UVA protection safeguards the deeper layers of your skin from premature aging and wrinkles, while **UVB protection** decreases the risk of sunburn and potential long-term damage.

Our **UPF50+ certified** hats have undergone thorough testing by independent laboratories and meet strict UPF50+ regulations, in accordance with the recognized standards of EN 13758-2:2003+A1.





PREMIUM MATERIALS AND PARTNERSHIPS

QUALITY ETHICAL

We are committed to hand-picking premium-quality materials from manufacturing partners that comply with ethical working standards and consciously strive to learn and contribute to a more sustainable manufacturing process. We value extending product longevity through innovative craftsmanship embodied in timeless and elegant designs.

FLEXIBRAID

An innovative crush-resistant material designed for travel enthusiasts. It is colourfast, hand washable, packable and lightweight

PAPER FIBRE

Organic reeds and grasses, harvested and dyed before being woven into a braid. Multiple braids of this natural fibre are stitched together to form the hat

MADAGASCAN RAFFIA

Premium quality raffia sourced from Madagascar. Crafted by hand, the natural raffia fibres are handwoven or crocheted by skilled artisans to form the hat

POLYBRAID / POLYPROPYLENE

A lightweight, durable synthetic fibre that is woven into a crush-resistant braid. These hats retain their shape, are fade-resistant and travel-friendly

POLYESTER KNIT

The tight knit of the synthetic polyester fibres creates a soft, supple hat with a comfortable fit that is colourfast, hand washable and crush-resistant

COTTON / LINEN / CORDUROY

Durable material that can be packed and folded, making it travel-friendly. Lightweight, hand washable and crush-resistant

MICROFIBER / NYLON

A quick-drying, water repellent material that is durable, hand washable and crush-resistant

100% WOOL FELT

Premium quality felt designed using 100% wool, sourced from R.W.S (Responsible Wool Standard) Certified suppliers. Luxurious, durable and packable

POLYESTER SUEDE

Synthetic suede material with a distinctive look that is soft to the touch, lightweight and durable



ADJUSTABLE SIZING

All our hats can be adjusted by tightening either the internal drawstring or our unique Comfy-Fit clip.

Use a soft tape measure and place it around your head, positioned mid-forehead and just above the ears.

Measure your head in centimeters to find the right hat size. If your measurement falls between sizes, choose the larger size to be guaranteed a comfortable fit.





FIONA #FBD496 - IVORY



NEW



MIXED IVORY/OLIVE

VINEYARD #FTM573

SIZE: M/L - 58 CM

BRIM WIDTH: 10 CM | **CROWN HEIGHT:** 9,5 CM

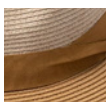
ADJUSTMENT: COMFY-FIT

MATERIAL: FLEXIBRAID. HAND WASH

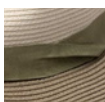
PACK FLAT, CRUSH RESISTANT



MIXED CAMEL/CAMEL



MIXED CAMEL/
CAMEL



MIXED IVORY/
OLIVE



SANDSTONE

PANA-MATE #FBD459 [UNISEX]

SIZE: S/M - 56 CM (IVORY, NATURAL), M/L - 58 CM, L/XL - 61 CM

BRIM WIDTH: 6 CM | **CROWN HEIGHT:** 9,5 CM

ADJUSTMENT: COMFY-FIT

MATERIAL: FLEXIBRAID. HAND WASH

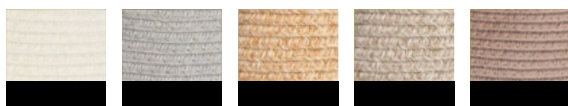
PACK FLAT, CRUSH-RESISTANT



SANDSTONE



NEW



IVORY

LIGHT GREY

NATURAL

SANDSTONE

TAUPE



FIONA #FBD496

SIZE: M/L - 58 CM, L/XL - 61 CM (IVORY, NATURAL, SANDSTONE)

BRIM WIDTH: 10 CM | **CROWN HEIGHT:** 9,5 CM

ADJUSTMENT: COMFY-FIT

MATERIAL: FLEXIBRAID. HAND WASH

PACK FLAT, CRUSH RESISTANT



NEW



IVORY
(58 & 61 CM)



IVORY/TEAL



NATURAL
(58 & 61 CM)



SANDSTONE
(58 & 61 CM)



TAUPE

NEW



ROSE/WHITE

SERENITY #FRL856 [UNISEX]

SIZE: M/L - 58 CM, L/XL - 61 CM
BRIM WIDTH: 7,5 CM | **CROWN HEIGHT:** 9,5 CM
ADJUSTMENT: COMFY-FIT
MATERIAL: FLEXIBRAID. HAND WASH
PACK FLAT, CRUSH-RESISTANT



TAUPE/WHITE



ROSE/WHITE

TAUPE/WHITE

NEW



CABANA #FTM750

SIZE: M/L - 58 CM

BRIM WIDTH: 7,5 CM | **CROWN HEIGHT:** 9,5 CM

ADJUSTMENT: COMFY-FIT

MATERIAL: FLEXIBRAID. HAND WASH

PACK FLAT, CRUSH-RESISTANT





GERRY #FGE17

SIZE: M/L - 58 CM, L/XL - 61 CM (CAMEL, LIGHT GREY, MASALA)

BRIM WIDTH: 7,5 CM | **CROWN HEIGHT:** 9,5 CM

ADJUSTMENT: COMFY-FIT

MATERIAL: FLEXIBRAID. HAND WASH

PACK FLAT, CRUSH-RESISTANT



BLUE

CAMEL
(58 & 61 CM)

LIGHT GREY
(58 & 61 CM)

MASALA
(58 & 61 CM)

PISTACHIO



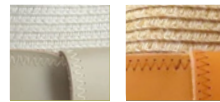
IVORY



NATURAL

HARPER #FTM529

SIZE: M/L - 58 CM
BRIM WIDTH: 8 CM | **CROWN HEIGHT:** 11 CM
ADJUSTMENT: COMFY-FIT
MATERIAL: FLEXIBRAID. SPOT CLEAN
GENUINE LEATHER TRIM
PACK WITH CARE



IVORY

NATURAL



SKY BLUE



SOFT PINK

AVOCA #FBD435

SIZE: M/L - 58 CM
BRIM WIDTH: 6 CM | **CROWN HEIGHT:** 9,5 CM
ADJUSTMENT: DRAWSTRING / COMFY-FIT
MATERIAL: FLEXIBRAID. HAND WASH
PACK FLAT, CRUSH RESISTANT



OATMEAL

SKY BLUE

SOFT PINK



LIONEL #FRM342 [UNISEX]

SIZE: S/M - 56 CM, M/L - 58 CM, L/XL - 61 CM
BRIM WIDTH: 6 CM | **CROWN HEIGHT:** 9,5 CM
ADJUSTMENT: COMFY-FIT
MATERIAL: 80% POLYPROPYLENE, 20% POLYESTER. HAND WASH
PACK FLAT, CRUSH RESISTANT



BLUE/WHITE BEIGE/WHITE BLACK/WHITE



IVORY/TAN

BELLA #FBD146

SIZE: M/L - 58 CM, L/XL - 61 CM (IVORY/IVORY, IVORY/STONE)
BRIM WIDTH: 7,5 CM | **CROWN HEIGHT:** 9,5 CM
ADJUSTMENT: DRAWSTRING / COMFY-FIT
MATERIAL: 100% POLYBRAID. HAND WASH
PACK FLAT, CRUSH-RESISTANT



IVORY/TAN

NEW



IVORY/BLUE IVORY/IVORY (58 & 61 CM) IVORY/NAVY IVORY/TAN IVORY/SAGE IVORY/STONE (58 & 61 CM)



IVORY/STONE

NALEDI #FRL434

SIZE: S/M - 56 CM (STONE, TAN), M/L - 58 CM, L/XL - 61 CM (STONE, TAN)

BRIM WIDTH: 7 CM | **CROWN HEIGHT:** 9,5 CM

ADJUSTMENT: COMFY-FIT

MATERIAL: 100% POLYBRAID. HAND WASH

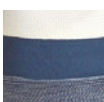
PACK FLAT, CRUSH RESISTANT



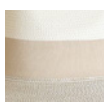
IVORY/NAVY



IVORY/TAN
(56, 58 & 61 CM)



IVORY/NAVY



IVORY/STONE
(56, 58 & 61 CM)



GILLY #FRL73

SIZE: S/M - 55 CM (STONE), M/L - 58 CM, L/XL - 60 CM (MIXED CAMEL, STONE)

BRIM WIDTH: 7,5 CM | **CROWN HEIGHT:** 9,5 CM

ADJUSTMENT: DRAWSTRING

MATERIAL: 100% POLYESTER KNIT. HAND WASH

PACK FLAT, CRUSH-RESISTANT



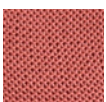
NEW



BLACK



BRIGHT RED



MASALA



MIXED CAMEL
(58 & 60 CM)



NAVY



PETROL BLUE



ROSEWOOD



SEAFOAM



STONE
(55, 58 & 60 CM)



SUEDE



CAROLINE #FEV090

SIZE: M/L - 58 CM

BRIM WIDTH: 7 CM | **CROWN HEIGHT:** 9,5 CM

ADJUSTMENT: COMFY-FIT

MATERIAL: 100% POLYESTER KNIT. HAND WASH

PACK FLAT, CRUSH RESISTANT



LIGHT BROWN MIXED BLACK MIXED BLUE WHEAT



CARAMEL

BRAIDED #FRM260 [UNISEX]

SIZE: M/L - 58 CM, L/XL - 61 CM

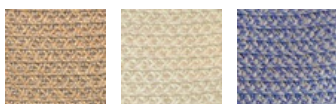
BRIM WIDTH: 8 CM | **CROWN HEIGHT:** 9,5 CM

ADJUSTMENT: COMFY-FIT

MATERIAL: 90% PAPER FIBRE, 10% POLYBRAID. SPOT CLEAN
PACK FLAT, CRUSH-RESISTANT



NATURAL



CARAMEL

NATURAL

PETROL BLUE



NATURAL

CARLA #FRL760

SIZE: M/L - 58 CM

BRIM WIDTH: 10 CM | **CROWN HEIGHT:** 9,5 CM

ADJUSTMENT: COMFY-FIT

MATERIAL: 90% PAPER FIBRE, 10% POLYBRAID. SPOT CLEAN

PACK FLAT, CRUSH-RESISTANT



IVORY



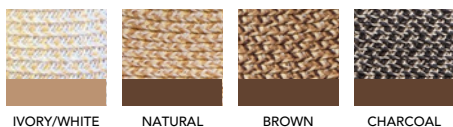
IVORY

NATURAL



OSCAR #FRM725 [UNISEX]

SIZE: M/L - 58 CM, L/XL - 61 CM
BRIM WIDTH: 8 CM | **CROWN HEIGHT:** 10 CM
ADJUSTMENT: COMFY-FIT
MATERIAL: 50% PAPER FIBRE, 50% POLYESTER. SPOT CLEAN
PACK WITH CARE





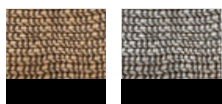
MIXED BLACK

BEAU #FBD95 [UNISEX]

SIZE: M/L - 58 CM, L/XL - 61 CM
BRIM WIDTH: 6,5 CM | **CROWN HEIGHT:** 10 CM
ADJUSTMENT: COMFY-FIT
MATERIAL: 100% PAPER FIBRE. SPOT CLEAN
PACK WITH CARE



BROWN



BROWN

MIXED BLACK



IVORY/WHITE

GILLAROO #FBD17

SIZE: M/L - 58 CM

BRIM WIDTH: 9 CM | **CROWN HEIGHT:** 10,5 CM

ADJUSTMENT: DRAWSTRING / COMFY-FIT

MATERIAL: 50% PAPER FIBRE, 50% POLYESTER. SPOT CLEAN

PACK WITH CARE



NATURAL



IVORY/WHITE



NATURAL





LIZZIE #FRL363

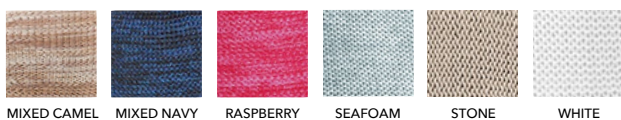
SIZE: M/L - 58 CM

BRIM WIDTH: 6 CM | **CROWN HEIGHT:** 10 CM

ADJUSTMENT: DRAWSTRING

MATERIAL: 100% POLYESTER KNIT. HAND WASH

ROLL UP, CRUSH-RESISTANT



MIXED CAMEL MIXED NAVY RASPBERRY SEAFOAM STONE WHITE



ANNA #FBD288

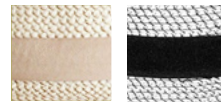
SIZE: M/L - 58 CM

BRIM WIDTH: 8 CM | **CROWN HEIGHT:** 10 CM

ADJUSTMENT: DRAWSTRING

MATERIAL: 80% POLYPROPYLENE, 20% POLYESTER
HAND WASH

PACK FLAT, CRUSH RESISTANT



BEIGE/WHITE

BLACK/WHITE



GATSBY #FRL30G

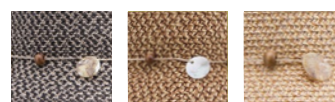
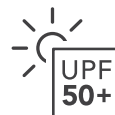
SIZE: M/L - 58 CM

BRIM WIDTH: 8 CM | **CROWN HEIGHT:** 10 CM

ADJUSTMENT: DRAWSTRING

MATERIAL: 50% PAPER FIBRE, 50% POLYESTER
SPOT CLEAN

PACK WITH CARE



CHARCOAL

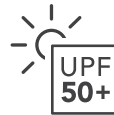
CHOCOLATE

NATURAL



TRAVELLER #FR52

SIZE: M/L - 58 CM
BRIM WIDTH: 11 CM | **CROWN HEIGHT:** 10 CM
ADJUSTMENT: DRAWSTRING
MATERIAL: 100% COTTON. HAND WASH
ROLL UP, CRUSH-RESISTANT



AVA #FRL826

SIZE: S/M - 56 CM, M/L - 58 CM, L/XL - 61 CM
BRIM WIDTH: 6 CM | **CROWN HEIGHT:** 6,5 CM
ADJUSTMENT: DRAWSTRING
MATERIAL: 90% LINEN, 10% COTTON. HAND WASH
ROLL UP, CRUSH-RESISTANT







BIANCA #FBD156

SIZE: M/L - 58 CM

BRIM WIDTH: 8 CM

ADJUSTMENT: VELCRO

MATERIAL: 100% PAPER FIBRE. SPOT CLEAN

ROLL UP, PACK WITH CARE



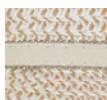
GREY/BLACK



IVORY/BLACK



MIXED BLACK



NATURAL



TRI-COLOUR





IVORY

HARLEY #FEV070 [UNISEX]

SIZE: M/L - 58 CM, L/XL - 61 CM

BRIM WIDTH: 4,5 CM | **CROWN HEIGHT:** 9,5 CM

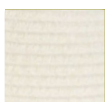
ADJUSTMENT: COMFY-FIT

MATERIAL: FLEXIBRAID. HAND WASH

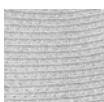
PACK FLAT, CRUSH RESISTANT



LIGHT GREY



IVORY



LIGHT GREY



NATURAL



CARAMEL

RESORT #FRM926 [UNISEX]

SIZE: M/L - 58 CM, L/XL - 61 CM

BRIM WIDTH: 4,5 CM | **CROWN HEIGHT:** 9,5 CM

ADJUSTMENT: COMFY-FIT

MATERIAL: 90% PAPER FIBRE, 10% POLYBRAID. SPOT CLEAN

PACK FLAT, CRUSH-RESISTANT



BEIGE



BEIGE

CARAMEL



NATURAL/KHAKI

EXPLORER #FXP11 [UNISEX]

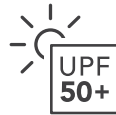
SIZE: M/L - 58 CM, L/XL - 61 CM

BRIM WIDTH: 8 CM | **CROWN HEIGHT:** 10 CM

ADJUSTMENT: DRAWSTRING / VELCRO

MATERIAL: POLYESTER MICROFIBER. HAND WASH

WATER REPELLENT. PACK FLAT, CRUSH-RESISTANT



STONE/NATURAL



CAMEL/NAVY



NATURAL/KHAKI



BRETON #FR35C

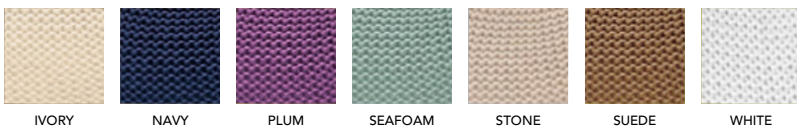
SIZE: M/L - 58 CM

BRIM WIDTH: 9 CM | **CROWN HEIGHT:** 9 CM

ADJUSTMENT: DRAWSTRING

MATERIAL: 100% POLYESTER KNIT. HAND WASH

PACK FLAT, CRUSH-RESISTANT





GOLF COLLECTION

Our golf hats feature a hidden magnet in the headband, designed to keep your metal golf ball-marker secure.





LIGHT GREY

PHOENIX #FEV040 [UNISEX]

SIZE: M/L - 58 CM, L/XL - 61 CM
BRIM WIDTH: 6,5 CM | **CROWN HEIGHT:** 12 CM
ADJUSTMENT: COMFY-FIT
MATERIAL: FLEXIBRAID. HAND WASH
PACK FLAT, CRUSH-RESISTANT



NATURAL



IVORY

LIGHT GREY

NATURAL



WHITE

REEF #FEV080 [UNISEX]

SIZE: M/L - 58 CM, L/XL - 61 CM
BRIM WIDTH: 6 CM | **CROWN HEIGHT:** 10 CM
ADJUSTMENT: COMFY-FIT
MATERIAL: FLEXIBRAID. HAND WASH
PACK FLAT, CRUSH-RESISTANT



MAGNETIC GOLF BALL MARKER



CAMEL



CAMEL



WHITE



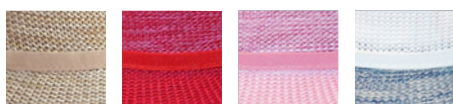
WHITE/BLUE

ASTON #FEV050

SIZE: M/L - 58 CM
BRIM WIDTH: 7 CM | **CROWN HEIGHT:** 9,5 CM
ADJUSTMENT: COMFY-FIT
MATERIAL: 100% POLYESTER KNIT. HAND WASH
PACK FLAT, CRUSH-RESISTANT



WHITE/BLUE



MIXED CAMEL

MIXED RED

PINK

WHITE/BLUE



BLUE

MORGAN #FEV060

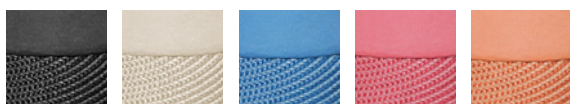
SIZE: M/L - 58 CM
BRIM WIDTH: 8 CM
ADJUSTMENT: VELCRO
MATERIAL: POLYBRAID PEAK, LINEN HEADBAND. HAND WASH
ROLL UP, CRUSH-RESISTANT



BLUE, PINK



MAGNETIC GOLF BALL MARKER



BLACK BRONZE BLUE PINK ORANGE

360FIVE
everyday





NATURAL

ERV1055 / EMILY

SIZE: M/L
MATERIAL: 100% PAPER FIBRE
ADJUSTMENT: DRAWSTRING
PACK WITH CARE



SPOT CLEAN

BRIM: 7,5 CM

CROWN: 11 CM



NATURAL



WHITE



WHITE



ERV1130 / DIANNE

SIZE: M/L
MATERIAL: 100% PAPER FIBRE
ADJUSTMENT: DRAWSTRING
PACK WITH CARE



NATURAL





NATURAL

UNISEX • SIZE: M/L, L/XL
MATERIAL: 100% POLYESTER
BRAID ADJUSTMENT: DRAWSTRING



NATURAL



GREY



GREY



NAVY COMBO

ERV1110 / MOORE

UNISEX • SIZE: M/L, L/XL
MATERIAL: 100% PAPER FIBRE
ADJUSTMENT: DRAWSTRING
PACK WITH CARE



CARAMEL



NAVY COMBO



CARAMEL



WHITE/NAVY

ERV2155 / JODY

UNISEX • SIZE: M/L, L/XL
MATERIAL: 100% COTTON
ADJUSTMENT: ELASTIC TOGGLE



GREY/NAVY



WHITE/NAVY



GREY/NAVY

INFORMATION FOR BUYERS

ORDER QUANTITIES

Minimum order quantity is a box of 25 hats, across any product style and colour.

ORDER PROCESS

AGM holds inventory in Mauritius - enquire with us for the latest stock availability



• AGM • CONTACT US

Send us an email for regional pricing and order forms, to get your hands on our high quality headwear today.

Feel free to contact our friendly staff to schedule a video chat for further information, enquiries or support with your order.

Please allow up to 24 hours for a response from our team.

AFRICA GOLF MANAGEMENT

ORDERS & ENQUIRIES

info@africagolfmanagement.com

WEBSITE

www.africagolfmanagement.com